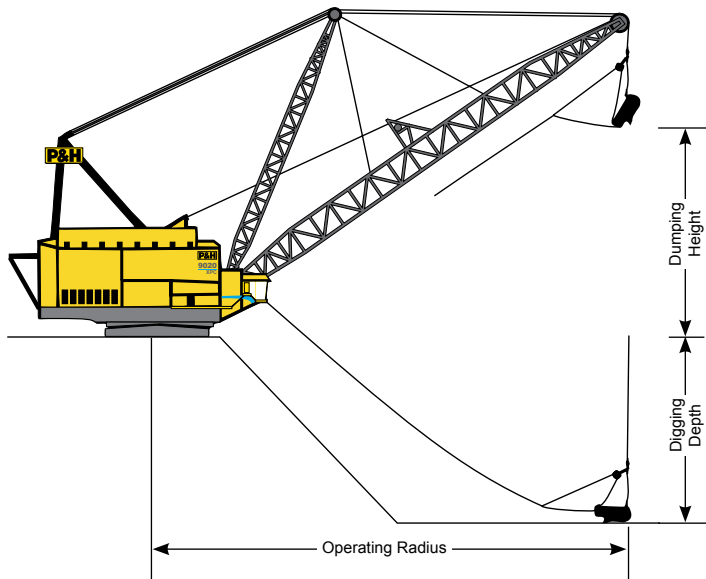


# 9020XPC

## Walking Dragline

### Digital AC Drive Control

## Operating Specification



### Typical 38° Boom Setting Configurations

other angle settings available as required

Bucket Capacity at 5000 lbs./cu. yd.	cu. yd.	118	134	147	153	153
	cu. m.	90	102	112	117	117
Hoisting Capacity	1000 lbs.	590	669	737	765	765
	1000 kg.	268	303	334	347	347
Length of Boom	ft.	425	400	375	350	325
	m.	129.5	121.9	114.3	106.7	99.1
Operating Radius	ft.	380	361	342	322	302
	m.	116	110.1	104.2	98.2	92.2
Max. Dumping Height	ft.	211	193	175	159	143
	m.	64.5	58.8	53.3	48.4	43.7
Max. Digging Depth	ft.	251	221	197	189	185
	m.	76.7	67.4	60.1	57.6	56.5
Width Across Shoes	ft.	125	125	125	125	125
	m.	38.1	38.1	38.1	38.1	38.1
Tail Swing Clearance	ft.	90	90	90	90	90
	m.	27.4	27.4	27.4	27.4	27.4

### Horsepower Configuration

(HP@690 V.A.C.)

Swing Motors	8x1150	8x1150	8x1150	8x1150	8x1150
Hoist Motors	6x1700	8x1700	8x1700	8x1700	8x1700
Drag Motors	6x1700	8x1700	8x1700	8x1700	8x1700
Walk Motors	4x1150	4x1150	4x1150	4x1150	4x1150

Bucket Capacity at 5000 lbs./cu. yd.	<b>cu. yd.</b>	<b>118</b>	<b>134</b>	<b>147</b>	<b>153</b>	<b>153</b>
	cu. m.	90	102	112	117	117
Operating Radius	<b>ft.</b>	<b>380</b>	<b>361</b>	<b>342</b>	<b>322</b>	<b>302</b>
	m.	116	110.1	104.2	98.2	92.2
Rope Diameters (Twin)	<b>in.</b>	<b>4.5</b>	<b>4.875</b>	<b>5.25</b>	<b>5.5</b>	<b>5.5</b>
	mm	114	124	133	140	140
Pitch Diameter of Drums	<b>in.</b>	<b>132</b>	<b>132</b>	<b>132</b>	<b>132</b>	<b>132</b>
	mm	3353	3353	3353	3353	3353

### Weights (without bucket)

Net Weight	<b>1000 lbs.</b>	<b>16500</b>	<b>16472</b>	<b>16428</b>	<b>16342</b>	<b>16245</b>
	1000 kg.	7484	7472	7452	7413	7369
Counterweight	<b>1000 lbs.</b>	<b>906</b>	<b>902</b>	<b>800</b>	<b>496</b>	<b>69</b>
	1000 kg.	411	409	363	225	31
Working Weight	<b>1000 lbs.</b>	<b>17642</b>	<b>17642</b>	<b>17522</b>	<b>17144</b>	<b>16620</b>
	1000 kg.	8002	8002	7948	7776	7539
Standard Tub Diameter	<b>ft.</b>	<b>88</b>	<b>88</b>	<b>88</b>	<b>88</b>	<b>88</b>
	m.	26.8	26.8	26.8	26.8	26.8
Approx. Tub Ground Pressure	<b>psi</b>	<b>20.1</b>	<b>20.1</b>	<b>20.0</b>	<b>19.6</b>	<b>19.0</b>
	KPa.	139	139	138	135	131
Standard Shoe Size (Width x Length)	<b>ft</b>	<b>17x88</b>	<b>17x88</b>	<b>17x88</b>	<b>17x88</b>	<b>17x88</b>
	m.	5.2x26.8	5.2x26.8	5.2x26.8	5.2x26.8	5.2x26.8
Approx. Shoe Ground Pressure**	<b>psi</b>	<b>36.9</b>	<b>36.9</b>	<b>36.6</b>	<b>35.8</b>	<b>34.7</b>
	KPa.	254	254	252	247	239

\*\*At 90% working weight.

### General Specifications

Clearance Under Shoes	<b>2' 0"</b> (0.6 m)	Diameter of Rail Circle	<b>78' 0"</b> (23.8 m)
Distance from Center Pin to Boom Foot	<b>40' 0"</b> (12.2 m)	Rail Width*	<b>16.5"</b> (419 mm)
Height of Boom Foot	<b>19.5"</b> (5.9 m)	Quantity and Diameter of Rollers	<b>171x14"</b> (356 mm)
Normal Length of Step	<b>7' 6"</b> (2.3 m)	Pitch Diameter of Swing Rack	<b>72.4'</b> (21.1 m)
Pitch Diameter of Point Sheave	<b>148" or 160"</b> (3759 mm or 4064 mm)	Max. Working Clearance Between Tub and Revolving Frame	<b>7' 0"</b> (2.1 m)



P&H MinePro Services  
 1-888-MINEPRO  
 Outside the U.S. and Canada  
 Phone: (414) 671-4400  
 Fax: (414) 671-7306  
[www.minepro.com](http://www.minepro.com)  
[www.phmining.com](http://www.phmining.com)

NOTE: All designs, specifications and components of the equipment described above are subject to change at manufacturer's sole discretion at any time without advance notice. Data published herein is informational in nature and shall not be construed to warranty the suitability of the equipment for any particular purpose as performance may vary with conditions encountered. The only warranty applicable is our standard written warranty for this equipment.

P&H and P&H MinePro Services are trademarks of Joy Global Inc. or one of its affiliates.  
 © 2010 P&H Mining Equipment Inc. All rights reserved.